

Full color controller for Wi-Fi solution manual
Suitable for HD-A30/A30+/C10/C30 /D10/D20/D30 series

I. Hardware connection (Software HDPlayer)



Image 1 Hardware connected

II. Full color Asynchronous controller with Wi-Fi mode , have 2 types: AP mode, Station mode.

The controller default mode is AP mode .

- 1) AP mode: The controller itself be used as Hotspot, and PC connected that Hotspot, then the PC can control the controller.
- 2) Station mode: Via Hotspot of Wi-Fi mode In controller, and connected to the Router in office. Then PC connected office Router to control the controller.

III. Details Manual

1. AP mode

1) The controller itself be used as Hotspot, and the Hotspot is the ID of controller. The default password: 88888888



Image2 ID of controller

2) Open the Software of HDPlayer, it will recognized the controller ID automatically

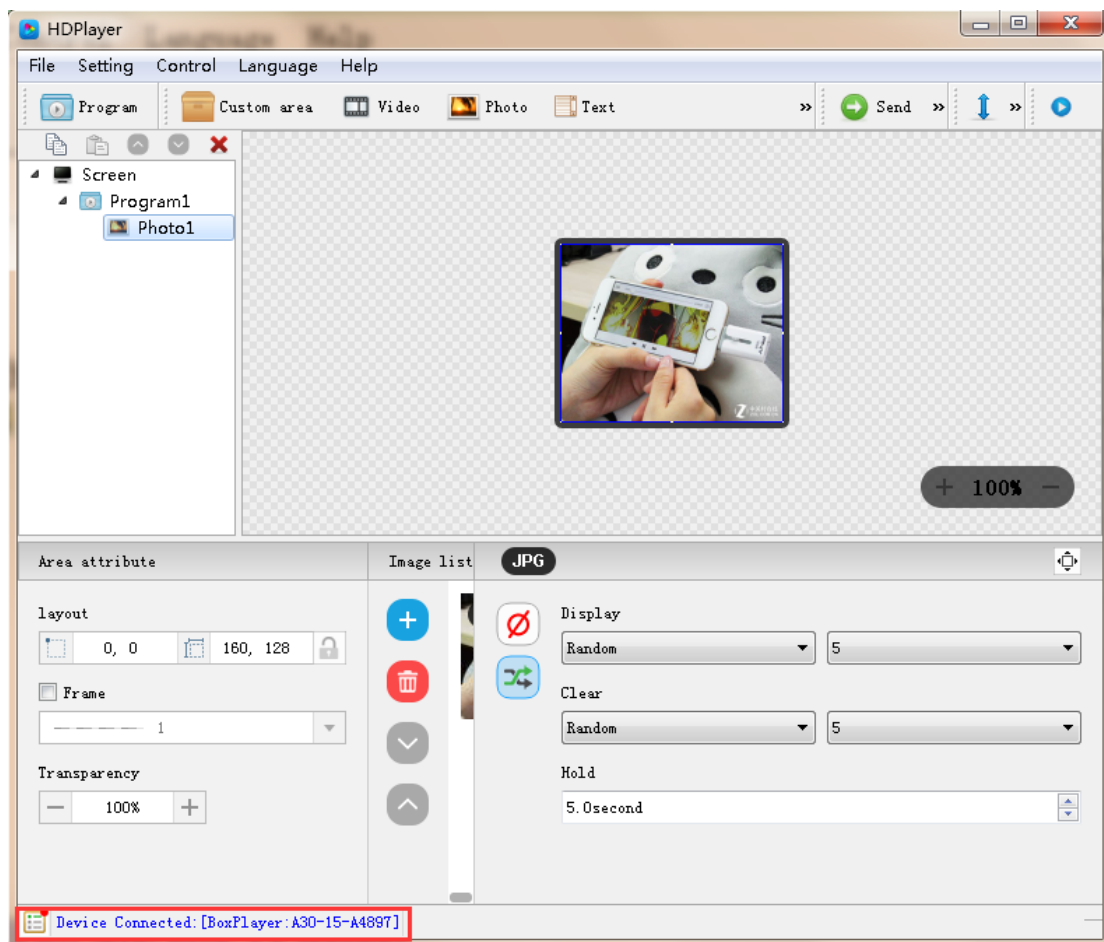


Image3: recognized controller ID

3) In software, Click Control-Device Information, then into setting.

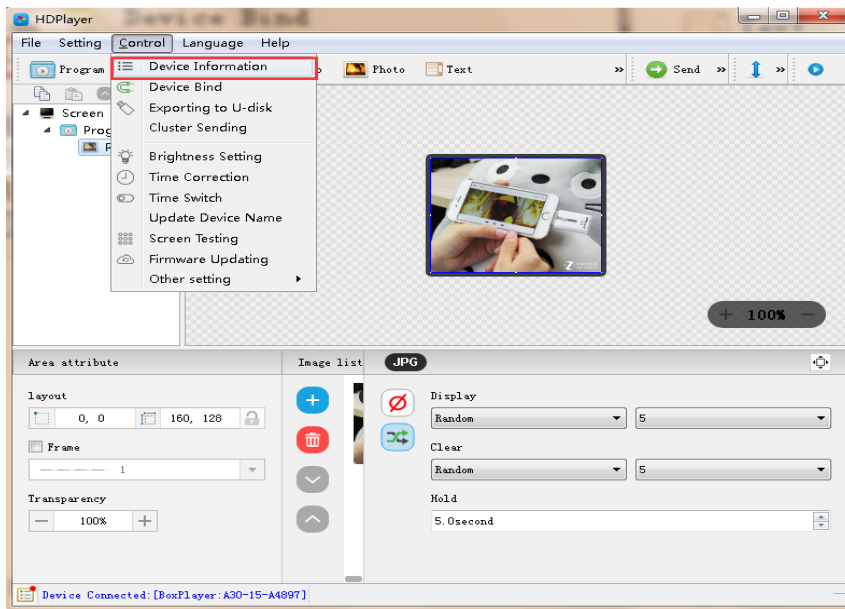


Image4 Wireless setting

4) Select AP mode---- Modify AP Information, change password etc. Then click “OK”, and “Send”

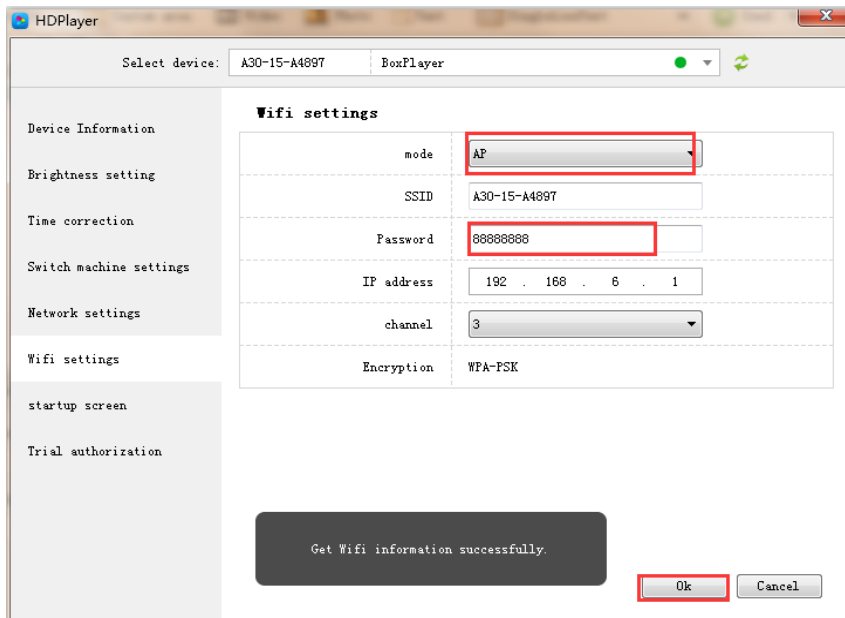


Image5 AP parameter setting

2. Station Mode

Select Station Mode in software, Right click of the Station Mode, then will find the office Wi-Fi router Signal, Or add the office Wi-Fi router signal by hand. Then click "Send".

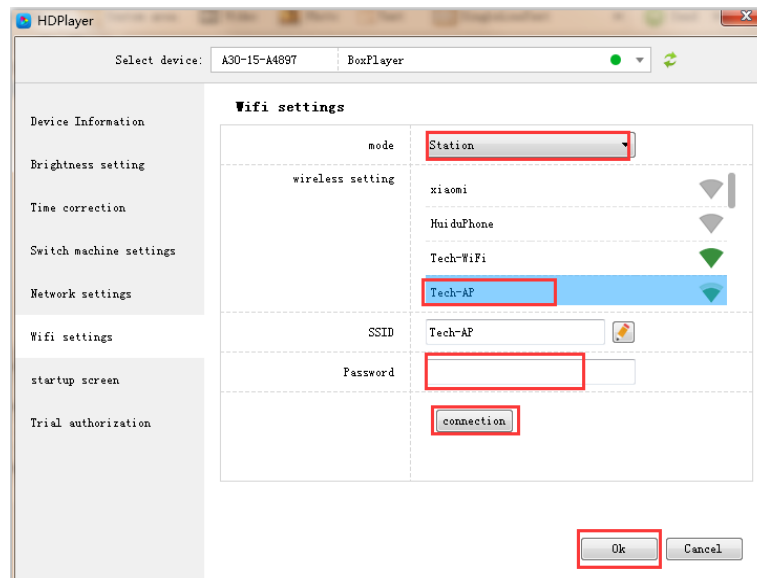


Image6Station mode

Note: First setting the Station mode, it need add the office Wi-Fi router Signal by Hand.